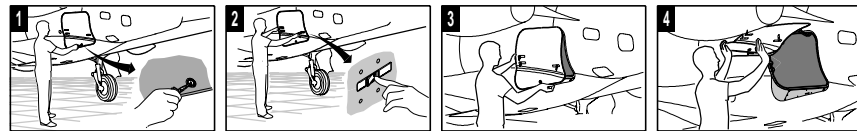


AIRCRAFT RESCUE & FIREFIGHTING INFORMATION

AFT BAGGAGE DOOR



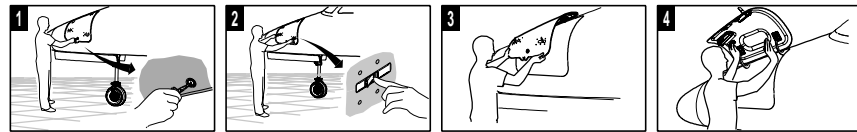
UNLOCK THE KEY LOCK.

PUSH THE LOCK TRIGGER OF ALL THREE LATCH PINS.

PULL THE LATCH HANDLE TO COMPLETE THE OPENING OF ALL THREE LATCHES.

PULL THE DOOR UPWARD.

FORWARD BAGGAGE DOOR



UNLOCK THE KEY LOCK.

PUSH THE LOCK TRIGGER OF BOTH LATCH PINS.

PULL THE LATCH HANDLE TO COMPLETE THE OPENING OF BOTH LATCH PINS. PUSH THE LOCK TRIGGER OF THE TENSION SHEAR LATCH.

PULL THE DOOR UPWARD.

PHENOM 300

FLIGHT CREW: 2

PASSENGER: 6-8

HEIGHT: 5,10 m – 16,73 ft

WING SPAN: 15,91 m – 52,20 ft

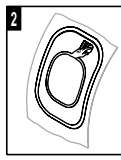
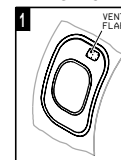
LENGTH: 15,64 m – 51,31 ft

WING FUEL TANKS CAPACITY: 2976 L (786 Gal.)

FUEL TYPE: ASTM D 1655 (JET A AND JET A1),

MIL-DTL-83133 (JP-8)

OVERWING EMERGENCY EXIT



CAREFULLY PUSH THE EMERGENCY DOOR INWARD TO COMPLETE ITS OPENING MOVEMENT.

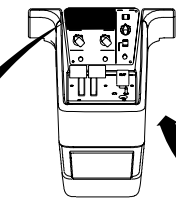
FIRE IN THE ENGINE

LIFT THE GUARD AND PRESS SHUTOFF 1 BUTTON OR SHUTOFF 2 BUTTON TO ACTIVATE THE FIRE EXTINGUISHING SYSTEM OF THE ENGINE

SET THE BOTTLE TOGGLE SWITCH TO THE DISCH POSITION TO RELEASE AGENT TO THE RESPECTIVE ENGINE



ENGINE CONTROL PANEL



WING TANK

OVERWING EMERGENCY ONLY

BATTERY

HYDRAULIC ACCUMULATOR

ENGINE INLET INGESTION AREA
4 m
13 ft

ELECTRONIC COMPARTMENT

BATTERY

HYDRAULIC RESERVOIR AND HYDRAULIC ACCUMULATOR

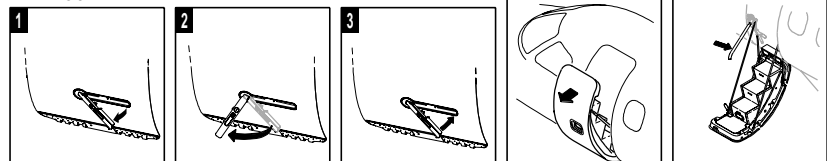
OXYGEN CYLINDER

MAIN DOOR

WING TANK

0	0	9	18	27	37	46
0	30	60	90	120	150	
161	41	28	23	22	20	
498	41	28	23	22	20	
925	105	82	74	71	68	
SPEED (kts)						
TEMP. (°C)						
TEMP. (°F)						

MAIN DOOR



PUSH THE TRIGGER THEN PULL THE EXTERNAL HANDLE OUT.

HOLD THE DOOR AND ROTATE THE HANDLE CLOCKWISE TO ITS STOP TO UNLOCK THE DOOR.

PUT THE EXTERNAL HANDLE BACK INTO ITS FLUSH POSITION.

LET THE DOOR COME DOWN.

MOVE THE HANDRAIL DOWNWARD TO COMPLETE THE DOOR ROTATION MOVEMENT.

PHENOM[®] 300
BY EMBRAER

FORWARD AND AFT BAGGAGE DOORS IN CONNECTION WITH THE INFORMATION PROVIDED IN THIS DOCUMENT ON THE USE OR IMPLEMENTATION OF SUCH INFORMATION AND THE USE OF THIS DOCUMENT AS A GUIDE, RELEASED AND RENOUNCED ALL WARRANTIES, GUARANTEES AND REMEDIES OF THE USER AND/OR THIRD PARTIES OF ANY KIND, WITHOUT LIMITATION TO ANY DEFECTS OR DAMAGES, INCLUDING BUT NOT LIMITED TO ANY IMPLIED WARRANTY OF MERCHANTABILITY OR FITNESS FOR A PARTICULAR PURPOSE, ANY IMPLIED WARRANTY ARISING FROM COURSE OF DEALING, USAGE OF TRADE, TRADE OR INDUSTRY, LIABILITY, HAZARD, CLAIM OR REMEDY IN CONTACT OR NOT, AND/OR ANY DEFECTS, DAMAGES, OR CONSEQUENTIAL DAMAGES, ACTUAL OR IMPLICATED, LIABILITY, HAZARD, CLAIM OR REMEDY FOR LOSS OF USE, REVENUE OR PROFITS, OR ANY OTHER DIRECT, INDIRECT, OR CONSEQUENTIAL DAMAGES.